



## Vacuload- Vacuumconveyor Systemen

Pinksterbloem 20,  
9761 LT Eelde-Holland  
Tel: 050- 2809389  
Mob: 06 800 70 411  
Mail: [info@vacuload.com](mailto:info@vacuload.com)  
web: [www.vacuload.com](http://www.vacuload.com)

### Carton or bag dump station



Carton or bag dump station 300 liters  
with support table 500mm deep, 900mm long  
approx.

Grating with 50x50mm and extraction hood.  
To connect prepared to feed adapter.

Consisting essentially of:

Frame approx 1060 x1360mm, base frame  
without cover approximately 1000mm high,  
material 1.4301 (304) / pickled and  
passivated, from Q-pipe

80x80x4, incl. Support table t = 6

Funnel inside dimension 1200x900x2 to DN  
175,

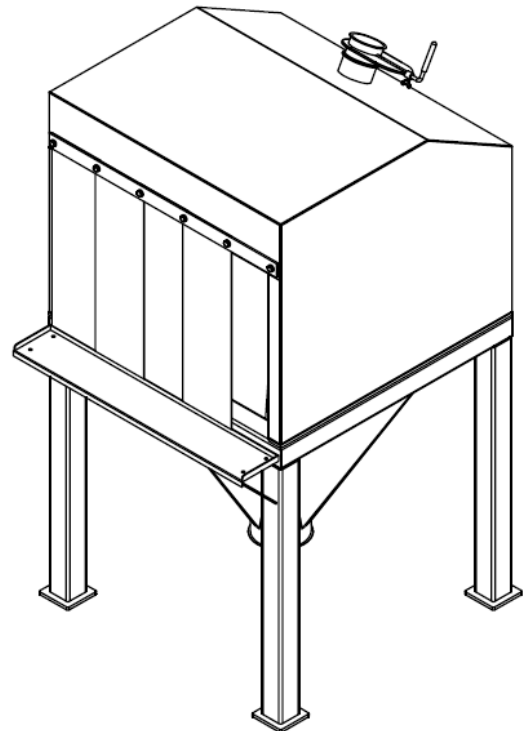
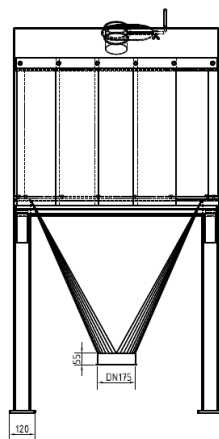
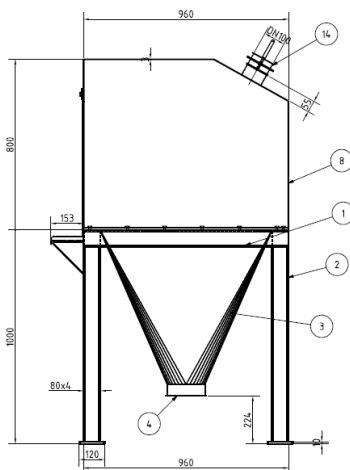
770 vertical height, Mat. 1.4301 / outside  
glass beaded

Grating 50x50 Mat. 1.4301 (304) for hopper  
Exhaust hood 1360x1060x3, Mat.

1.4301 / outside glass beaded, 800 high, incl.

Silicone strip curtain and

Throttle valve manual



Subject to technical modifications without notice due to further development